



CATERPILLAR CS12GC ROLLER

Minor Service

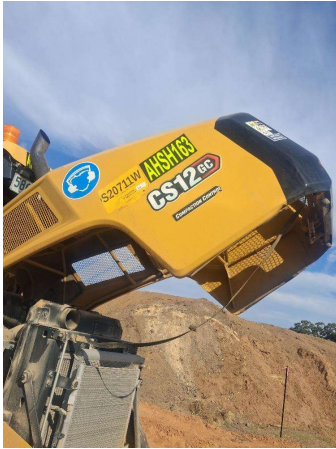
● 0 ● 14 ● 68 ● 26

| | | | |
|-------------------|---|------------------|---------------------------------|
| Inspection Number | RP054272 | Customer No | 200000 |
| Serial Number | GCS00534 | Customer Name | AUSTRALIAN HAMMER SUPPLIES HIRE |
| Make | CATERPILLAR | Customer Email | |
| Model | CP12 GC (SMOOTH) | Works Order | RP054272 |
| Equipment Family | ROLLER | Completed On | 20/10/2025 2:57:52 PM |
| Asset ID | AHSH163 | Inspector | Collin Graham |
| Location | AUSTRALIAN HAMMER SUPPLIES HIRE Unit 3/32 WILLIAMSON RD INGLEBURN 2565 | PDF Generated On | 20/10/2025 |
| | | Machine Hours | 795 |
| Customer |  | Next Meter | 814 |

General Info & Comments

● **General Info/Comments**

750 hr service



TASK SAFETY INSTRUCTIONS

- | | |
|--|------|
| ● 1.1 Wear Correct PPE at all times | PASS |
| ● 1.2 All isolation and safe work procedures must be followed | PASS |
| ● 1.3 Identify task hazards and controls utilising hierarchy or controls model | PASS |
| ● 1.4 Ensure a competent operator and spotter is utilised to move mobile equipment | PASS |
| ● 1.5 Ensure all mobile equipment is fundamentally stable | PASS |
| ● 1.6 Ensure three points of contact is maintained during access and egress | PASS |
| ● 1.7 Ensure acceptable housekeeping standards are maintained at all times | PASS |

MACHINE GENERAL RUNNINGCHECKS

| | | |
|---|---|------|
| ● | 2.1 Check all work lights, beacon & reverse alarm for operation | PASS |
| ● | 2.2 Test all dash warning lights, gauges and audible alarms for correct operation | PASS |
| ● | 2.3 Check idle timer for correct shut down operation | PASS |
| ● | 2.4 Check operation of all three emergency stop buttons | PASS |
| ● | 2.5 Check operation of horn | PASS |
| ● | 2.6 Check operation of reverse camera | PASS |
| ● | 2.7 Check alternator charge voltage | PASS |
| ● | 2.8 Check operation of auto grease system by manually activating timer | N/A |
| ● | 2.9 Check fire system control panel for 'Normal' | N/A |

PM FIRE SUPPRESSION SYSTEM

| | | |
|---|--|---------------------------------|
| ● | 5.1 Ensure fire suppression bottle and components are securely mounted and in good condition | N/A |
| ● | 5.2 Ensure fire suppression is correctly charged | N/A |
| ● | 5.3 Inspect last charge date | DATE:2025-10-20T00:00:00.000000 |
| ● | 5.4 Check all fire extinguishers are securely mounted and in good condition | PASS |
| ● | 5.5 Check all fire extinguishers are correctly charged | PASS |
| ● | 5.6 Inspect last charge date | DATE:2025-10-20T00:00:00.000000 |

PM ENGINE

| | | |
|---|--|------|
| ● | 6.1 Perform engine valve set | N/A |
| ● | 6.2 Inspect air intake system hoses, pipes, clamps for signs of dirt ingress | PASS |
| ● | 6.3 Inspect engine for oil or fuel leaks | PASS |
| ● | 6.4 Inspect engine components for missing clamps | PASS |

| | |
|--|------|
| ● 6.5 Inspect exhaust system for signs of leaks, loose bolts or missing clamps | PASS |
| ● 6.6 Inspect turbo for security and signs of leaks | PASS |
| ● 6.7 Inspect condition of exhaust lagging | PASS |
| ● 6.8 Inspect engine mounts for condition and loose hardware | PASS |
| ● 6.9 Inspect alternator mount condition and adjustment | PASS |
| ● 6.10 Inspect wiring condition and security | PASS |
| ● 6.11 Inspect engine belts | PASS |

PM ENGINE COOLING SYSTEM

| | |
|--|------|
| ● 7.1 Check coolant level | PASS |
| ● 7.2 Check condition of radiator cap | PASS |
| ● 7.3 Check condition of radiator core | PASS |
| ● 7.4 Check cooling system for signs of leaks | PASS |
| ● 7.5 Check hose and clamp condition | PASS |
| ● 7.6 Inspect fan condition and operation | PASS |
| ● 7.7 Inspect radiator and fan guard condition | PASS |

PM SWING TRANSMISSION

| | |
|---|-----|
| ● 8.1 Inspect swing transmission for signs of leaks | N/A |
| ● 8.2 Inspect swing transmission oil level | N/A |

PM HYDRAULIC SYSTEM

| | |
|---|------|
| ● 9.1 Check hydraulic oil level | PASS |
| ● 9.2 Inspect hydraulic cylinders for leaks and security | PASS |
| ● 9.3 Inspect hydraulic hoses for leaks, damage, security | PASS |
| ● 9.4 Inspect hydraulic pump condition, leaks, security | PASS |

● 9.5 Check Pilot Accumulator operation as per OEM Maintenance Procedure - Test Boom Down Functionality with engine off PASS

PM FINAL DRIVES

● 10.1 Inspect LHS final drive mount condition for leaks and security PASS

● 10.2 Inspect LHS oil level and mag plug condition PASS

● 10.3 Inspect RHS final drive mount condition for leaks and security PASS

● 10.4 Inspect RHS oil level and mag plug condition PASS

PM UNDERCARRIAGE

● 11.1 Inspect LHS track tension N/A

● 11.2 Inspect RHS track tension N/A

● 11.3 Inspect tracks for loose/missing bolts N/A

● 11.4 Inspect load and carrier rollers for signs of leaks N/A

● 11.5 Inspect idlers for signs of leaks N/A

● 11.6 Inspect sprocket segments condition N/A

● 11.7 Inspect track frame for cracks, lose or missing hardware N/A

PM FRAME AND BODY

● 12.1 Check panels for damage and security PASS

● 12.2 Check access steps and walkway condition PASS

● 12.3 Inspect boom condition – cracks, missing clamps, damaged pipes, excessive movement, lubrication N/A

● 12.4 Inspect stick condition – cracks, missing clamps, damaged pipes, excessive movement, lubrication N/A

● 12.5 Inspect quick hitch condition and operation N/A

● 12.6 Inspect bucket condition – cracks, wear, damage, mounts N/A

● 12.7 Inspect GET condition and hardware N/A

PM ELECTRICAL SYSTEM

| | | |
|----------------------------------|--|------|
| <input checked="" type="radio"/> | 13.1 Check battery condition | PASS |
| <input checked="" type="radio"/> | 13.2 Check battery terminal condition | PASS |
| <input checked="" type="radio"/> | 13.3 Check battery security | PASS |
| <input checked="" type="radio"/> | 13.4 Check battery box drain is clear | PASS |
| <input checked="" type="radio"/> | 13.5 Check wiring condition and security | PASS |

PM GREASE SYSTEM

| | | |
|----------------------------------|--|------|
| <input checked="" type="radio"/> | 14.1 Check all points for acceptable lubrication | PASS |
| <input type="radio"/> | 14.2 Inspect grease system operation | N/A |
| <input checked="" type="radio"/> | 14.3 Check grease line condition | PASS |
| <input type="radio"/> | 14.4 Refill grease tank | N/A |
| <input type="radio"/> | 14.5 Lubricate bucket linkage | N/A |
| <input type="radio"/> | 14.6 Lubricate blade linkage | N/A |
| <input type="radio"/> | 14.7 Lubricate boom & stick linkage | N/A |
| <input type="radio"/> | 14.8 Lubricate swing bearing | N/A |

PM OPERATOR STATION

| | | |
|----------------------------------|--|------|
| <input checked="" type="radio"/> | 15.1 Check all doors for correct opening and closing adjustments and operation | PASS |
| <input checked="" type="radio"/> | 15.2 Inspect condition of door seals | PASS |
| <input checked="" type="radio"/> | 15.3 Check window glass and seal condition | PASS |
| <input checked="" type="radio"/> | 15.4 Check mirror condition and adjustments | PASS |
| <input checked="" type="radio"/> | 15.5 Fill window washer reservoir | PASS |
| <input checked="" type="radio"/> | 15.6 Inspect air con vents condition | PASS |
| <input checked="" type="radio"/> | 15.7 Inspect seat belt and mounting hardware | PASS |

● 15.8 Inspect seat condition, operation and mounting PASS

● 15.9 Replace cabin A/C filter N/A

OIL SAMPLING

● 16.1 Engine PASS

PM POST SERVICE INSPECTION CHECKS

● 17.1 All inspections have been completed and rectified as required PASS

● 17.2 All safety related defects have been repaired or reported PASS

● 17.3 All defects have been noted and reported PASS

● 17.4 All fluids are at correct level and drain plugs tight PASS

● 17.5 All oil samples have visually been inspected and any notable signs of contamination have been reported PASS

● 17.6 All replaced filters have been cut and inspected and photos added to CAT Inspect and reported to supervisor PASS

● 17.7 Machine has been recommissioned and ready for operation PASS

● 17.8 PM service notification marked off in Vision Link PASS

DEFECTS IDENTIFIED

● 18.1 DEFECTS IDENTIFIED na

OIL USED

● 19.1 Hydraulic oil 0

● 19.2 Engine oil 9

● 19.3 Slew oil 0

● 19.4 Gear oil 0

● 19.5 Coolant 0

● Site photo